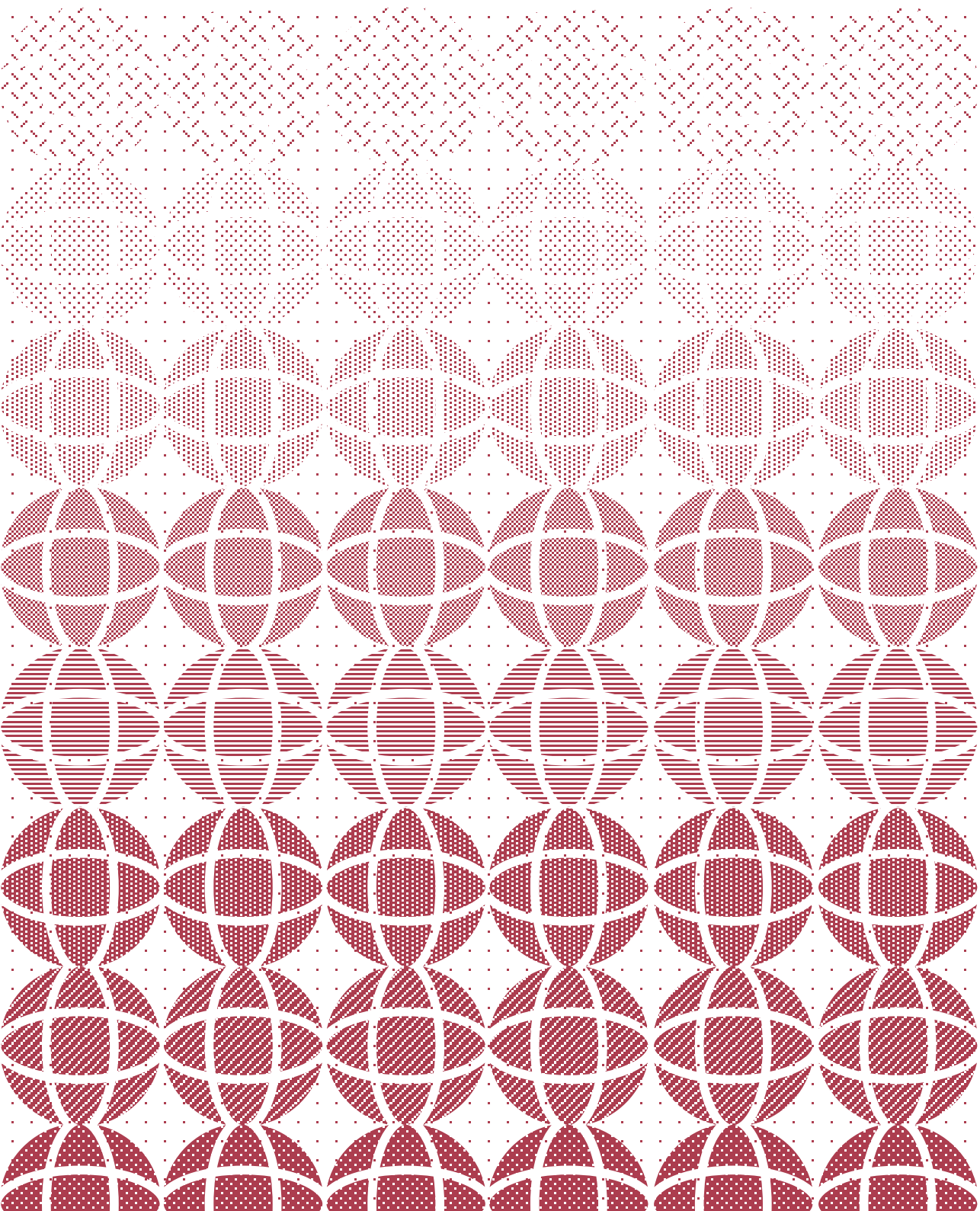


Soletanche
Bachy

2018





SOLETANCHE BACHY

World leader in foundations and soil technologies

Soletanche Bachy develops innovative and effective geotechnical solutions for deep foundations, retaining structures, reinforcing, waterproofing, and ground improvement. The Group operates as both a general contractor and a specialist subcontractor to design, build, rehabilitate and commission all types of structure: ports, dams, car parks, metros, tunnels, energy facilities, buildings, etc.

Revenue¹

€1,587 m

Employees

9,700

Order intake

- N105 Contract, North-South Corridor, Singapore
- Maison Blanche Station, Line 14 South, Paris, France
- Silicon Valley Clean Water, Phase 2B, California, United States
- Boone Dam, Tennessee, United States
- Prairie du Sac Dam, Wisconsin, United States
- Prince Edward Station, Singapore

Thames Tideway Tunnel, United Kingdom



1 - Managed revenue

Christophe Dauchy, CEO, Soletanche Bachy

“Further consolidating our local roots”

What were the major events for your company in 2018?

First, we recorded an improvement in employee safety. For the sixth consecutive year, the number of lost-time accidents per million hours worked has fallen, as has the severity rate. This is a great source of satisfaction and the results reinforce our determination to build a strong, shared safety culture throughout the company. Economically, our revenue increased and our order book reached its highest-ever level, with a good balance between major projects, which give us long-term visibility, and smaller local projects, which give us resilience and bring in repeat business activity.

What were the major projects in 2018?

We carried out 4,000 projects in 2018. Some were very large. One example is Grand Paris Express Line 15, for which we were in charge of works packages T2A and T3A involving a high level of special works. I could also mention the Subansiri Dam in India and the Ituango Dam in Colombia, where we built a cut-off wall under difficult conditions. Lastly, we were happy to win a major works package on the underground North South Corridor motorway in Singapore, which boosts our presence in Asia but will also be a major technical challenge.

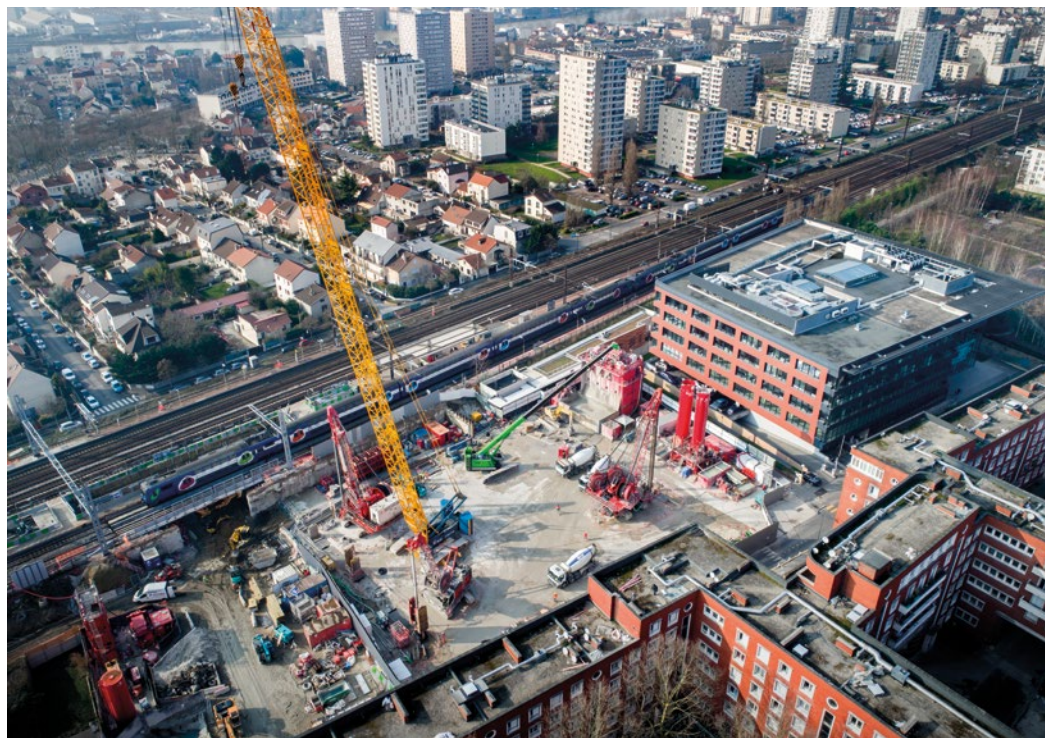


And what is your strategy?

In 2019, we hope to both consolidate our local roots and strengthen cooperation between our local subsidiaries and our major projects subsidiary, to be able to better meet the requests of our customers. We also have several Research & Development projects coming to fruition. One example is the hydrofraise with grippers, and another is digitalisation of worksite processes. These innovations set us apart and we plan to accelerate their rollout and move them to the industrial stage within coming months.

France

Grand Paris Express Line 15 South



Soletanche Bachy is participating in the construction of seven stations, more than 10 km of tunnels, and numerous shafts on cramped worksites in crowded urban areas as part of three Line 15 South works packages.

The teams are notably installing deep diaphragm walls with waterstop joints brought down to a depth of 74 metres. They are using innovative machines such as the Hydrofraise® with grippers and the compact Hydrofraise® designed for confined spaces, as well as reinforcing techniques such as jet grouting, ground freezing and compensation grouting.

More than

10km

of tunnels

© [Watch the video:](#)

United States

Prairie du Sac Dam, Wisconsin

Due to deterioration of its existing wooden piles, the hydroelectric dam required renovation. Our American subsidiary Nicholson Construction worked alongside the client from the design stage and installed nearly 1,000 micropiles and 250 anchors.

1,000
micropiles

250
anchors



© [Watch the video:](#)



Guatemala United States Embassy

Rodio Swissboring Guatemala executed the infrastructure works for the 40,000 sq. metre project, which includes an office building and ancillary buildings and will house the new U.S. Embassy in Guatemala City.



Hungary Komárom bridge on the Danube

HBM built the bridge foundations and carried out extreme load tests on the piles.

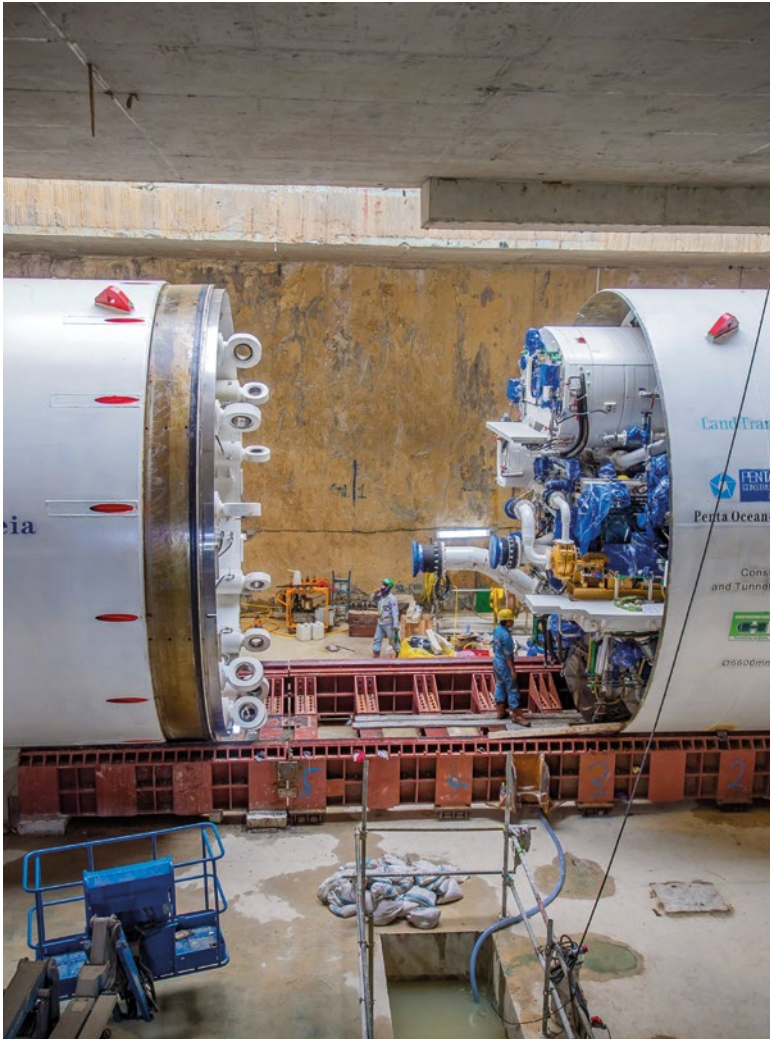
Mexico Gran Terraza Coapa

For the shopping centre foundations, Cimesa installed 1,150 linear metres of diaphragm walls and 900 Starsol® piles, excavated around 405,000 cu. metres of materials and cast a 57,000 sq. metre slab on top of very soft clay.



Colombia Ituango Dam

Two Colombian Soletanche Bachy subsidiaries, Soletanche Bachy Cimas and Geofundaciones, built a slurry cut-off wall with a length of more than 500 linear metres and a depth of 38 metres.



Construction of two
800
metre tunnels

Singapore **Thomson- East Coast MRT line**

As part of a flagship Thomson Line works package in central Singapore, Bachy Soletanche Singapore served as the main contractor in partnership with a Japanese company to build two 800 metre tunnels and a station located partly underneath the existing Orchard Road station, Singapore's busiest.

© [Watch the video](#)

India

Subansiri Dam

For the country's biggest hydroelectric project, Soletanche Bachy International - Major Projects installed an 18,000 sq. metre cut-off wall to a depth of up to 50 metres, without affecting the construction of the dam. The Group carried out most of the work from tunnels with limited space. To meet this challenge, the teams used a Hydrofraise® HC05 specially designed for confined spaces. Thanks to its compact size, this machine fits in a shipping container, which allowed it to be brought by road from Kolkata, more than 1,000 km away.

18,000

sq. metre cut-off wall





Albania Trans Adriatic Pipeline

Bessac, Soletanche Bachy's subsidiary specialising in tunnels, dug four microtunnels in the mountainous region near Çorovoda for a gas pipeline linking Greece and Italy.

New Zealand Auckland City Rail Link C1

In partnership with Soletanche Bachy International - Major Projects and a local company, March Construction worked as a general contractor to build a dual railway tunnel under a historic building, which was underpinned.



[▶ Watch the video](#)



Benin Womey Bridge

SFAO and its partners installed the bridge foundations and defined the pile driving procedure and construction system.

Photo credits:

©Soletanche Bachy photo library

Page 02: ©Société du Grand Paris, Horizon
– Yves Chanoit

Page 04: ©Soletanche Bachy photo library
Farosa's drone

Page 06: ©Soletanche Bachy photo library
Michael Liew

Page 07: ©Soletanche Bachy photo library
Yannick Cormier

Page 08: Albanie: ©Yves Chanoit for Soletanche
Bachy / Bénin: ©Matière SA

Design and layout:

Abmo

Soletanche Freyssinet is world leader in soil, structural and nuclear engineering. The Group brings together an unparalleled array of construction and engineering expertise and brands. Soletanche Bachy, Menard, Terre Armée, Freyssinet, Nuvia and Sixense provide technical excellence to ensure structure performance and sustainability. The Group supports the expansion of its brands by providing the resources to extend their worldwide networks and broaden their technology portfolios.

www.soletanchefreyssinet.com

